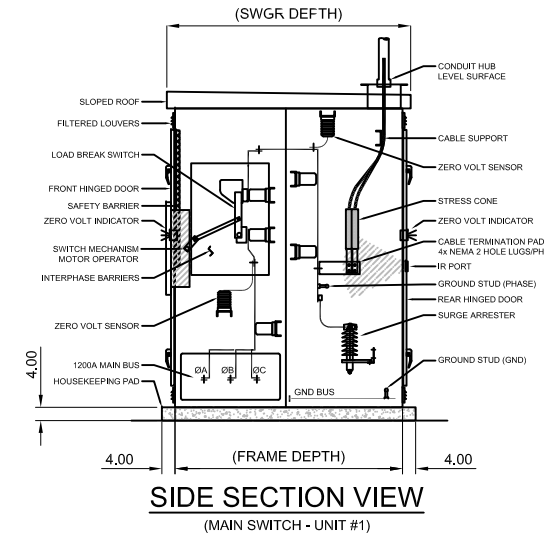
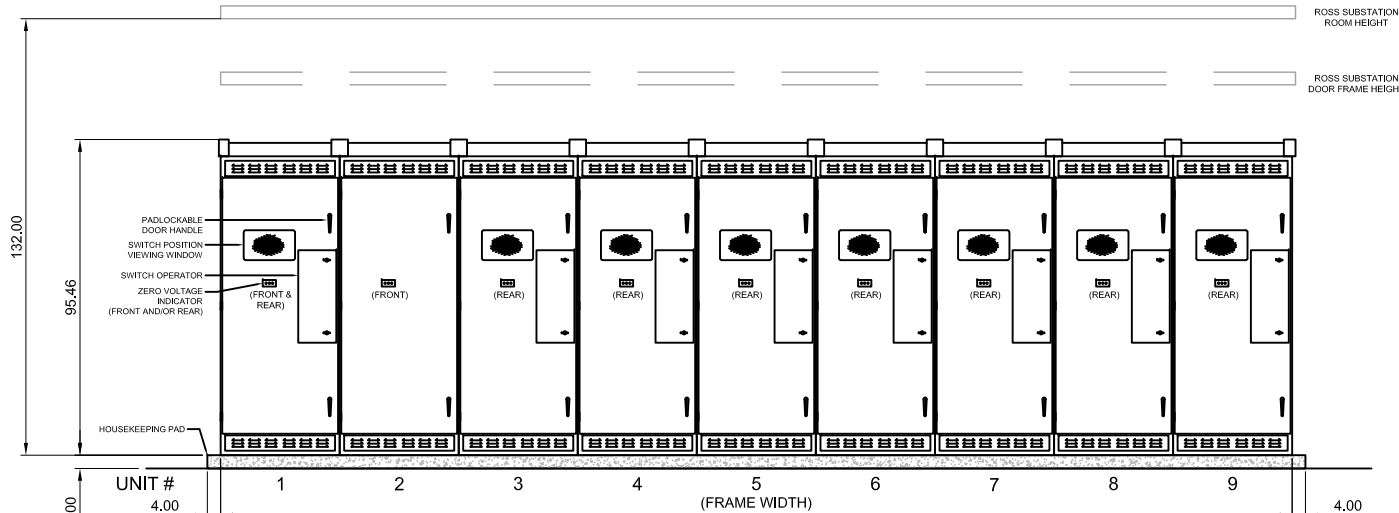


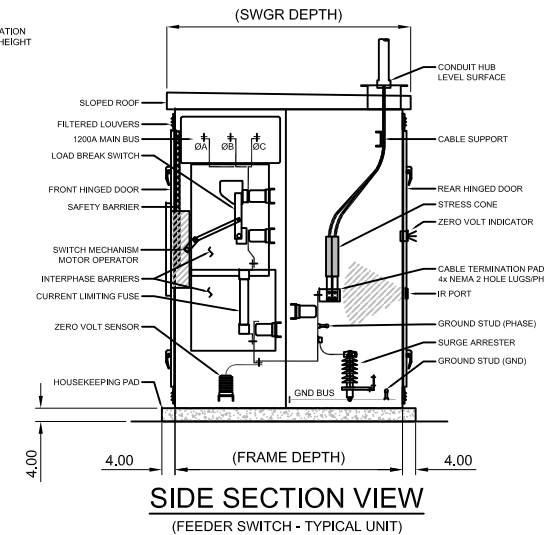
SINGLE LINE DIAGRAM



**SIDE SECTION VIEW
(MAIN SWITCH - UNIT #1)**



FRONT VIEW




**SIDE SECTION VIEW
(FEEDER SWITCH - TYPICAL UNIT)**

- GENERAL NOTES**
- EQUIPMENT MUST FIT WITHIN ROSS SHAFT DIMENSIONS OF 123" (H) X 144" (W) X 55" (D)
 - EQUIPMENT MUST WEIGH LESS THAN ROSS CAGE LOAD LIMIT OF 13,500 LBS.
 - EQUIPMENT MUST FIT WITHIN 120" (H) X 72" (W) ROSS SUBSTATION DOOR FRAME.
 - ALL REFERENCED EQUIPMENT DIMENSIONS ARE APPROXIMATE AND PENDING ACTUAL MANUFACTURER'S DATA

****NOT FOR CONSTRUCTION****

| 0 | 100% DESIGN | 9/13/24 | HDR |
|-----|-------------|---------|-----|
| REV | DESCRIPTION | DATE | BY |

| | | | | | | |
|--|------------|-------------------------------|-------------------------|------|-----|--|
|  Undergound Research Facility 630 EAST SUMMIT STREET LEAD, SD 57754 (605) 722-8650 | DRAWN BY | HDR | DESCRIPTION | | | |
| | CHECKED BY | | 4850-ES Ross Substation | | | |
| APPROVED BY | | TITLE | | | | |
| SCALE | NTS | General Arrangement 15kV Swgr | | | | |
| | | NUMBER | SHEET # | SIZE | REV | |
| | | 261316-GA | 1 of 1 | A | 0 | |